

CASE STUDIES OF ENVIRONMENTAL QUALITY OF BUILDINGS DAMAGED BY EARTHQUAKE, PRIOR TO ADAPTIVE RECONSTRUCTION: PALAZZO MOSCARDELLI IN OFENA AND EX- COLONIA IX MAGGIO AT MONTELUCCO DI ROIO, L'AQUILA

ANGELA LOMBARDI¹, JOHN MURPHY JR², ANTONELLA IANNARELLI³,
SIMONETTA CIRANNA⁴, PATRIZIA MONTUORI⁵, ELSA G. DE LEON⁶
The University of Texas at San Antonio, USA (^{1, 2&6}), Università dell'Aquila, Italy (^{4&5}),
ARTA Abruzzo, Italy (³)

ABSTRACT

As a community responds to a case of earthquake disaster with regard to rebuilding a largely historic building rich environment, many things are considered: structural viability, remnant percentage of original structure, safety of remnant structure in which to work, assessment of its development over time, cultural value of replacing the building with facsimile of historic structure, residual value of the property, and many others. When deemed appropriate and beneficial to reconstruct a damaged historical building, one often overlooked aspect of design and planning is assurance of environmental quality/indoor air quality. The country of Italy is a productive area for study in this regard based upon its central geological fault line that has shown a recent propensity to shift and its largely historic built environment. This research analyses two historic structures that have been damaged in the central Italy earthquake of 2009, specifically in the cities of L'Aquila and Ofena, which are planned for reconstruction and adaptive reuse. Research into the history of each structure, their uses over time, design principles, and construction methodology were completed. In addition, testing protocol and documentation are presented, testing and sampling were completed for climatological data, and both indoor and ambient measurements for particulate counts, gases, total VOC's, and bio aerosols. Further explanation as to the specific importance of bio aerosol surveys is explained. The equipment utilized was GX-2009 Gas Detector, Bio-Pump Plus bio-aerosol analysis, Model P311 Particle Counter, a Kestrel Weather Tracker, and VOC Canister sampling. Results of testing are analyzed and compared to WHO exposure limits. Suggestions regarding pollutant source control for environmental quality through some proposed suggestions for reconstruction strategies, as well as providing data for possible future standardized processes for pre-design analysis for adaptive reuse of damaged historic structures. *Keywords: Historic buildings, post-earthquake reconstruction, indoor air quality, environmental quality, adaptive reuse, bio aerosols, pathogens, bio organisms, radon gas.*

1 INTRODUCTION

Designing an adaptive reuse or reconstruction project involves all the usual architectural design considerations involved with a new structure. However, there are also additional considerations that must be undertaken. In large part, these can be seen as an expanded consideration of existing conditions including water damage, mold, biological contaminants, and other contaminant sources from former space uses. Early in the project consideration process, it would be necessary to carry out due diligence of existing environmental conditions and an environmental assessment. For example, in the U.S.A. this process would be overseen by the EPA and in the EU it would be overseen by the European Council [1]. In addition, reconstruction processes and materials specifications become considerations for future environmental quality assessment for the respective project. Of course, when one considers both historic and earthquake damaged structures, a higher level of complexity due to unknowns becomes an issue. The case studies in the research herein involve buildings that

are both historic and earthquake damaged, but the authors are only considering the existing conditions of the structure and their relative relationship to environmental quality/indoor air quality in situ. The first investigative step is to consider the location and history of the structures.

1.1 History and location

The two buildings were selected to represent two different settings to allow for some geographical variability. One building is located at the top of a large hill outside of a town of medium size, L'Aquila, Italy, and was originally located and designed during the Fascist Period to take advantage of prevailing quality ambient air. The Colonia Montana IX Maggio, at Monteluco di Roio was initially created to house children in need of convalescence, therapy or recovery from respiratory conditions [2]. As Pagano wrote in an article published in the architecture journal *Casabella*, in 1937, the building is an example of *"healthy and simple construction.....that can be proudly included in the international literature of mountain colonias .."* [3]. The Colonia has undergone several use changes over time, including being an American military base in WWII, holding facility for Dalmatia refugees, and most recently a *Università dell'Aquila* College of Engineering facility [4]. Also the environmental context, which motivated the site selection for such a peculiar building type, was altered throughout time. In fact, the building was originally conceived following the principle of architectural and landscape total integration: located almost on the crest of the plateau of the hill of Roio, it marked the limit between the southern part, even today devoid of arboreal vegetation, and the northern side where a thick pinewood is standing. Until mid-19th century the whole hill of Roio was largely devoid of trees and used as a pasture for animals of local farmers. At the end of 19th century, landscape was severely altered with a massive planting of conifers by the State Forestry Corps in order to retain the soil and prevent landslides on the road below and on the recently built railway line. Historic images of the building show the relationship with the rural context, which is free in the area immediately close to the building.



Figure 1: Ex Colonia IX Maggio,
Monteluco di Roio
(Photocredit: E. G. De Leon)



Figure 2: Office inside Colonia IX Maggio,
abandoned after 2009 earthquake
(Photocredit: E. G. De Leon)

Unfortunately, the site was already modified in the 70s' with the introduction of an incoherent curtain of tall evergreens, located in front of the southern front of the building, prior to the construction of a parking lot.

The other building, the Palazzo Moscardelli, is located in the historic center of the Medieval Hill town of Ofena, Italy, which was built on the ruins of the ancient Italic-Roman settlement of *Ofinium* on the southern slope of the *Gran Sasso* mountain.

The medieval fortified village still retains remnants of old bastions, some of which were turned into compact and tall houses with defensive function. Within the urban fabric, the roads rarely follow contour lines, like in most Medieval cities, but are organized following a Roman cruciform plan.

The city settlement lies north of the plateau of Navelli and is located inside the boundaries of the National Park of *Gran Sasso and Laga* Mountain, and Nature Reserve of *Voltigno* and *Angri* Valley. Because of its peculiar location and climate conditions, the city environs are characterized by varied vegetation and growth of some extremely rare plant species, such as *Goniolimon italicum*, also known as L'Aquila limonium, which can be found only in the inner hollows of this province, and the L'Aquila broom (*Genista pulchella* subsp. *aquilana*). Because of summer high temperature peaks, due to the high continentality of the area, exposure to the south and hilly altitude, Ofena is known, together with Capestrano, as the 'oven of Abruzzo'.

The building is the historical property of the Moscardelli family, who was in the past one of the most important landowners of the area, contributing to founding the settlement on the hill during the Middle Age. The original core of the palace dates back to 15th century, as evidenced by several architectural details. The palace was later expanded throughout time until 18th century and after the 1703 earthquake. It is one of the most prominent historic monuments of the historic center of the town, being the place of birth of a prominent futurist poet Nicola Moscardelli (1894-1943) [5]. The palace still remains intact, including the apartment where the poet lived, with his studio, furniture and books. Both of these buildings were significantly damaged in the earthquake of 2009.

1.2 Condition/damage assessment and pollutant source recognition

Assessing environmental quality in historic and damaged buildings is a complex process that should consider many facets of the original design, including structure, weatherproofing, environmental controls, and finishes. Fundamental to this assessment is the visual observation of the current state of the building. Does one find water damage, are interior finishes stained, does one smell odours that could be attributable to mold, is mold seen, is the roof system breached, are there openings in the structure, etc.? Following the observations, testing should be employed to capture any possible airborne pollutants, hydrocarbons, particulates, bio aerosols, or volatile organic compounds. In addition, basic environmental measurements should be taken to provide background information for point in time the samples were taken. Through results of said testing, conclusions can be drawn about the possibility of occupant exposure to existing conditions, and thus a statement of, presumably, less than optimum environmental quality. The research included herein, in fact, uses these assessment strategies and the following methods were employed.

Of course, with testing results in hand, one has to evaluate the existing conditions in relation to some standards of human exposure or "acceptable risk". There are two different standards systems in place that can be considered that are geographically based: USA vs. EU [6]. However, because of the location of these two case studies, researchers choose to

investigate use of the EU system and the WHO Air Quality Guidelines for Europe for their analysis.

2. RESEARCH METHODS

For each building surveyed, in-situ testing was carried out under the guidance of local inspectors and building officials. In addition to visual reconnaissance throughout the building, the following testing strategies were employed.

The instrumental survey consisted of the collection of samples through the use of four instruments: GX-2009 Gas Detector, Bio-Pump Plus bio-aerosol analysis, Model P311 Particle Counter, Kestrel Weather Tracker, and VOC Canister sampling was undertaken by ARTA Abruzzo, by Carlo Bellina Agostinoni. See Table 1 for further explanation and summary of equipment and specific usage.

Samples for gas emissions, air particulate counts, bio-aerosols, humidity/temperature and total VOC's were taken on each of the historic structures analysed using these instruments in 3-5 different locations and various rooms. The selection of rooms depended on the observed conditions of each, as well as the apparent "worst" conditions to create a concept of worse-case scenario. For example, locations were sought with visual confirmation of mold, high humidity, structural damage, the condition of location, and past uses. Any obvious changes of rooms since occupant departure were noted. During the instrumental survey three out of five instruments provided us automatic results. These results are related to weather and airborne particulate counts. However, typology of particulate samples was not ascertained. The bio-aerosol and VOC samples were captured and sent for analyzation to a laboratory under the administration of ARTA Abruzzo. Figures 1, 2, and 3 below illustrate the sample location strategies. Researchers were unable to sample or analyse radon gas occurrence levels at either subject building. However, regional data regarding radon gas emissions is available for consideration, collected by ARTA Abruzzo [7].

Table 1. Environmental Site Assessment Survey Equipment & Usage

Indoor Air Quality and Interior Environmental Conditions for Adaptive Reuse of Historic Structures				
Environmental Site Assessment Survey Instruments				
The chart below shows instruments that will be utilized during Summer 2016 L'Aquila Campaign providing major information on the hazardous substances to be surveyed. Survey time and methods.				
Instrument Name	Instrument Dimension	Instrument Goal	Survey Time	Survey Method
Zefon Bio- Pump Plus*	4.3/8" (w) x 2.75" (h) x 8" (d)	Multi-purpose particle collection device. It collects viable and non-viable bio-aerosols. For example: mold spores, pollen, insect parts, skin cell fragments, fibers, and inorganic particulate.	Uses predetermine sampling times of 1, 2, 5, or 10 minutes.	Identify location for each room of the structure, which will be indicated on a proper key floor plan. These will also be documented through photographs. Construction techniques and interior materials finishes will be described. Take the sample according to the function of each instrument. All of the instruments will be utilized in the same location.
Kestrel 4000	Same dimension as a remote control.	It is set up to display 10 measurements or calculations in different modes. It measures the following elements: wind speed, temperature, wind chill, humidity, heat index, dew point wet bulb, barometric pressure, altitude, and density altitude.	Few seconds to a maximum of 20 minutes.	
Model P311 Handheld Particle Counter	7" x 3.5" x 1.9" (L x W x H)	The Air Technology P311 handheld particle counter measures 0.3 um to 5.0 um with a flow rate of 0.1 CFM (2.83 LPM).	1 second to 99 minutes 59 seconds. This sampling time is configurable.	
GX-2009 Gas Monitor	2.7" x 3" x 1" (H x W x D)	It uses an advanced detection system consisting of four gas sensors; the personal four-gas monitor detects the presence of combustible gas, oxygen (O ₂), carbon monoxide (CO), and hydrogen sulfide (H ₂ S) simultaneously.	The gas monitor response time takes within 30 seconds.	
TVOC Stainless Canister* and Assay 580*	Basket size.	TVOC and 4-PCH canister measures the organic components. The Assay 580 will measure the Formaldehyde.	Time is between 4-8 hours depending on the dimension of the canister.	

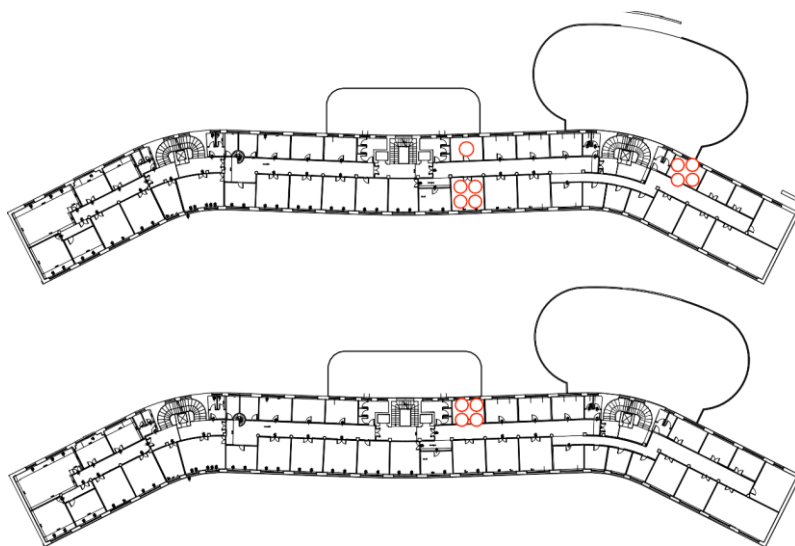


Figure 3: Floor sampling locations, Colonia building



Figure 4: 1st floor sampling locations, Palazzo Moscardelli



Figure 5: 2nd floor sampling locations, Palazzo Moscardelli

3. RESULTS

As one can imagine, initial results analysis involves straight data from equipment reading and/or scientific/microscopic sample reading, which are generally straightforward reports of measurements taken. The following are tables of such measurements taken from the two subject buildings. The secondary portion of the research “analysis” to complete the results report involves comparison of testing results to some listing of acceptable risk standards for said pollutants found.

3.1 Samples results

Summary table 2 illustrates equipment utilized and environmental data collected for both buildings. And, table 3 presents the particulate counts taken at both buildings. The other onsite “real time” sampling taken was through use of a RK Instrument GX-2009 Gas

Detector. In both buildings sampled, by and large, no discernible levels of H₂S, CO, LEL, or O₂ were found. Two exceptions to this were: 1) a CO reading of 18 ppm ambient air condition between Colonia building and parking lot and 2) a CO reading of 2 ppm near a heating unit that was not functioning. In addition, Figure 5 and 6 show the laboratory analysis results of VOC canister testing for ambient air conditions and indoor air conditions for the Colonia in Montelucio di Roio. Bio aerosol samples were taken and results are summarized in several tables for each sample room location. Results are discussed in section 3.2.4 below. However, due to space limitations of this paper, summary tables were included herein, but all summary tables are available upon request. Actual radon assay samples were not undertaken, however a wider approach has been adopted for radon gas emission assessment, using data provided by ARTA Abruzzo which is monitoring since 2009 all the Abruzzo region area [7].

Table 2: Environmental conditions data

Kestrel 4000 Weather Tracker Samples					
Measurement	Sample No.1	Sample No.2	Sample No.3	Sample No. 4	Ambient
Site: Colonia Poggio di Rojo					
Altitude	1676.00	1686.00	1714.00		1691.00
Barometric Pressure	28.70	28.69	28.67	28.67	28.69
Wet Bulb	70.20	73.00	72.00	72.30	72.30
Dew Point	67.30	67.60	68.60	70.50	66.90
Heat Index	85.30	87.80	88.90	90.00	89.10
Humidity	64.60	65.00	55.10	60.20	55.50
Temperature	80.90	83.10	84.20	84.70	85.80
Site: Palazzo Moscardelli					
Altitude	2852	2851	2862	2842	
Barometric Pressure	27.52	27.52	27.51	27.53	
Wet Bulb	70.7	73.8	70.7	70.9	
Dew Point	67.4	67.4	69.5	65.1	
Heat Index	83.1	87.4	82.6	83.7	
Humidity	64	63.8	60.6	63.8	
Temperature	79.8	83.5	80.5	80.4	

Table 3: Particulate count measurements

Airy Technology Model P311 Particle Counter			
Particle Counter Samples	CNT	Σ	Δ
Sample No.			
Site: Colonia Poggio di Rojo			
Sample Ambient Air	0.3 μm	202371	178766
	0.5 μm	23605	23082
	5.0 μm	523	523
Sample 1	0.3 μm	240173	207936
	0.5 μm	32237	31189
	5.0 μm	1048	1048
Sample 2	0.3 μm	223771	193895
	0.5 μm	29876	28961
	5.0 μm	915	915
Sample 3	0.3 μm	208961	142426
	0.5 μm	66535	58766
	5.0 μm	7769	7769
Sample 4	0.3 μm	211819	142271
	0.5 μm	69548	61717
	5.0 μm	7831	7831
Site: Palazzo Moscardelli			
Sample 1	0.3 μm	114723	95828
	0.5 μm	18895	15397
	5.0 μm	3498	3498
Sample 2	0.3 μm	129263	117775
	0.5 μm	114488	10822
	5.0 μm	666	666
Sample 3	0.3 μm	157531	145659
	0.5 μm	11872	10944
	5.0 μm	928	928
Sample 4	0.3 μm	124915	113076
	0.5 μm	11839	11203
	5.0 μm	636	636

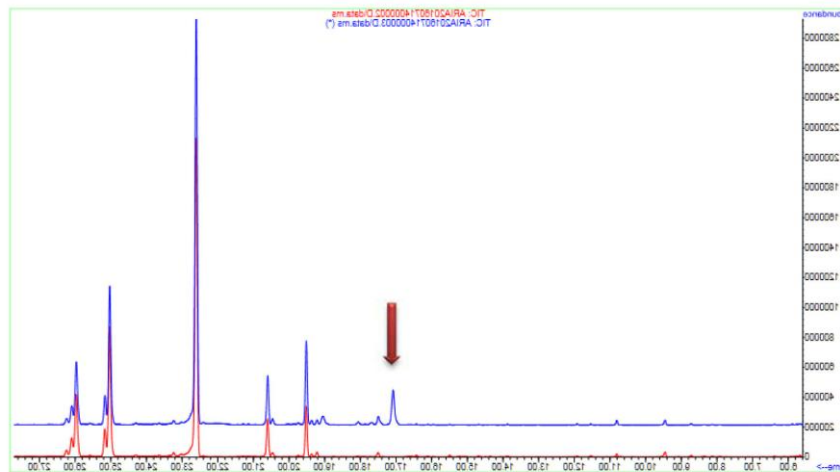


Figure 6: Colonia building – Overlay of the gas chromatographic profiles related to base line (red) and to one sample inside building (blue).

3.2 Comparative analysis to standards

As state earlier, this secondary analysis step includes taking the resultant measurements comparing them to accepted risk levels of pollutant compounds or materials. For this purpose, after reviewing the applicable laws and guidelines with associated standards shown in Table 4, the authors chose to use the WHO guidelines for indoor air quality: selected pollutants (WHO Office for Europe, 2000). While a complex overall assessment of actual physiological risk may include guidance and thus more than the actual sample result measurements, researchers use the method of comparing resultant numbers to guideline values. From said guidelines, “the numerical guideline values and the risk estimates for carcinogen should be regarded as the shortest possible summary of a complex scientific evaluation process.” In addition, “or some pollutants no guideline values are recommended, but risk estimates are indicated instead” [8].

Table 4. Guidelines for allowable concentrations

Guidelines for Allowable Concentrations	
(Per WHO, 2000)	
Contaminant	Max Allowable Concentration
Formaldehyde	27 ppm
Particulates	50 µg/m ³
Total Volatile Organic Compounds	500 µg/m ³
4-PCH	6.5 µg/m ³
Carbon Monoxide	9 ppm and no greater than 2 ppm above outside value

3.2.1 Particulate data collection assessment

Particulate data collected for both buildings shows that the ambient conditions are very similar to the indoor environment. However, there are unintended limitations with the particulate counter equipment with respect to being able to compare to guidelines because the particulate guidelines are units of microgram per cubic meter (ie. mass). Equipment used measures only count of particulates based upon size (in microns) per cubic meter of air, and conversion to mass based units would require ascertaining the density of the particulates, with assumed values of porosity and shape and volume. This data, and therefore the conversion, is beyond the scope of this research. However, there is anecdotal value in ascertaining that the ambient air and the indoor air are of somewhat similar count, therefore it can be concluded that no increase of indoor particulates over time has occurred. Therefore, it can be said that adequate ventilation has occurred over same time.

3.2.2 Gas data collection assessment

Hand held gas meters are, obviously, intended to inform occupants of possible existence of harmful gases at a specific point in time. As indicated above, meter reading for this research were largely rated as “no discernible measurement of harmful gasses” with two exceptions. For one incident, because the equipment was not functional (and space unoccupied), the slight CO reading of 2 ppm at the Palazzo Moscardelli can most likely be attributed to residual off-gassing from heating equipment from uses in the past. Relative to any reuse of space, such situation would most certainly be mitigated through replacement of heating system, something likely through architectural redesign and construction process anyway.

For the other incident, at the Colonia building a 10 ppm reading of CO was shown near the parking lot in an ambient conditions situation. Presumably, external vehicle traffic in said parking lot provides combustion source for said “slight reading”, and is regularly dissipated through wind and environmental convection. However, being slightly over the CO guideline for allowable levels (see Table 6), mitigation measures are called for in any redesign of the outside space adjacent to the Colonia building site due to proximity to the building and high potential of infiltration into the interior space.

3.2.3 VOC canister data assessment

As the above Figures 5 & 6 indicate, the base line, taken outside the building, shows that outdoor air is rich of Volatile Organic substances, both of natural and anthropic origin, therefore its gas chromatic profile graph is characterized by a multitude of peaks.

A useful overlay of interior and exterior gas chromatic profile graphs emphasizes that no presence of substances directly attributable to building’s internal sources can be identified. This is a typical condition of places with abundant air exchange and with no emissive sources. The Colonia’s building, damaged by the earthquake, has doors and windows in bad conditions, sometimes even missing. As well cracks onto the exterior walls are clearly visible. These conditions prevent the building to be considered ‘confined spaces’

The only peak present in the sample gas chromatic profile graph, highlighted with a red arrow in Figure 6, is an Alkane. Alkanes are known for applications as solvents and as important components of crude oil, diesel, and gasoline. [9] Presumably it can be concluded that the source of Alkane compounds is directly tied to the parking lot usage by combustion vehicles as well as asphalt paving materials used for parking surface. This supports gas meter results discussed earlier.

Utilized techniques for the sampling and analysis of VOC proved to be extremely sensitive, bringing researchers to require the need to appropriate sealing during renovation works in order to drastically decrease the level of ‘uncontrolled’ air exchange with the outdoor. As well, sample analysis and sampling took to the conclusion that it would be extremely effective a sampling design and scheduling in order to undertake an extensive campaign.

3.2.4 Bio aerosol data assessment

Summarized data results (as stated earlier, data not included herein due to space limitations) indicate that samples R1, R2, R3 and R4, taken in the Colonia building at Poggio di Roio, contain very few pollen species, prevailing the ones from *Pinaceae*, then *Graminaceae*, *Cupressaceae* ed *Alnus*.

The high presence of *Pinaceae* pollens is related to the massive presence of pine wood which have their blooming period in the month of July. *Cupressaceae* ed *Alnus*, on the contrary, bloom during Spring, therefore, detected presence of their pollens is most probably due to a lack/absence of air exchange in the building. Because of their dimensions, from 15 to 200 micrometers, pollens can easily penetrate indoor spaces by air, as in this case, or through transport via shoes, clothes, animals or even objects. During blooming periods, indoor pollens’ concentration is lower than outdoor; in order to understand relationship between indoor and outdoor environment, data recording the period of permanence in the air of the most allergenic pollens were extracted from ARTA Abruzzo bulletin in the days the samples were taken: bulletin data sheet confirms that *Cupressaceae* ed *Alnus* pollens were not present in the outdoor environment.

In order to better understand effects on human health of the presence of different pollens, Table 4 below provides some interpretation data:

Table 4: Interpretive Bio Aerosol Data

POLLINS	Allergenic power	Blooming PERIOD
Pinaceae	low	April - July
Graminaceae	from low to very high	May - October
Cupressaceae	From high to very high	January - April
Betulaceae(Alnus)	high	February - April
Fagaceae	from low to medium	April - July
Umbelliferae	low	
Compositae (Artemisia)	medium	April - July
Chenopodiaceae	from low to medium	May - October
Urticaceae	very high	
SPORES	Allergenic DEGREE	Dispersion PERIOD
Alternaria	very high	May - November

Allergenic power is the capacity of causing allergic reactions depending on the pollen grain allergenic degree. Pollens allergenic degree depends also on the area's climatic condition during pollens dispersion. In urban areas, for example, the presence of atmospheric factors such as pollution, can contribute to a higher sensitization to airborne pollen.

Other data indicates, as researchers visually assessed, presence of spores from several molds, in medium concentration. *Alternaria*, which is the most allergenic molds in Italian climate, is present in very low concentration. A presence of *Alternaria* spores is also present in the outdoor environment, with higher values of 53.73 spores/m³ on July 11 and 104.47 spores/m³ on July 12, as extracted from ARTA Bulletin.

Samples taken in the "Palazzo Moscardelli" in Ofena show an increased variety of pollens and mold spores in comparison with Montelucio di Roio building, with a moderate increase of their concentrations throughout the space. Generally, presence of pollens of summer blooming plant species, in accordance with the sampling period (July), were detected.

Knowledge of Ofena's climate and varied vegetation is necessary to interpret data results. Numerous pollens include some allergenic species such as *Graminaceae*, *Cupressaceae* and *Urticaceae*, rendering the indoor spaces a place for potential allergies. Comparison with the ARTA bulletin, show also that some detected pollens are attributable to spring season, such *Alnus*, *Cupressaceae*, *Corylaceae* and *Populus*, most probably because rooms are not subject to adequate air exchange.

Worthwhile to be noted is the presence of several molds species whose proliferation is related with summer high temperature and high humidity, in particular the high percentage of humidity enhance the growth of different molds species. These molds, such as *Alternaria*, *Cladosporium*, *Torula*, *Fusarium*, *Leptosphaeria*, *Epicoccum*, *Pleospora* are causes of allergies. In particular, in Italy the most allergenic molds are: *Alternaria* (growing on decomposing fruit and vegetables and in extremely humid spaces), *Cladosporium*, *Aspergillus* and *Penicillium*. Some of these spores are characterized by a unique form and dimension to be able to penetrate deeply into the respiratory tract, reaching lumbs and pulmonary alveoli. Inhalation of the spores of *Alternaria*, for example, is one of the causes of bronchial asthma.

Pollens and mold rich varieties detected in the indoor spaces let us also understand that the building is not properly sealed from the outdoor environment. Not inhabited since the 2009 earthquake, Palazzo Moscardelli's existing windows and door openings are historically typical in that they are not efficiently sealed. Such data collection indicate that indoor air is both polluted by water intrusion related mold development and substances that are to be considered allergenic, a condition showing a much larger risk than the situation existing in Montelucio di Roio.

As is the case for molds, main effects caused by pollens on human health can be related to specific allergies to the substance, known as *pollinosis*. Allergies develop when pollen concentrations reach values generating varied symptoms such as conjunctivitis, respiratory tract inflammation, cough, sore throat, asthma, continuous secretion from the nose, etc. Usually periods of *pollinosis* are limited to blooming periods of the specific plant species generating allergies.

Confined spaces can be an effective shelter for those people who suffers from pollen allergies, as long as you can limit indoor concentrations of bio contaminants. Allergenic substances may exist due to poor air exchange based on poor natural ventilation strategies designed into the architecture, or base upon non functionality of the natural ventilation strategies. In either case, mitigation strategies should be employed during the redesign of the space to be reconstructed or adaptively reused. This is a priority in the case of Palazzo Moscardelli in Ofena.

3.2.5 Radon gas assessment

As was indicated earlier, no Radon gas samples were taken. However, historic data indicates regional predominant Radon levels of 393 Bq/m³ as maximum value in L'Aquila and 115 Bq/m³ as maximum value in Ofena.

Although at present time no regulations have been established for Radon concentration limits in residences or public buildings in Italy, a Recommendation of the European Commission 90/143/EURATOM of 1990 established some thresholds: 400 Bq/m³ the maximum acceptable value beyond which some remedy actions need to be undertaken; 200 Bq/m³ design value for new constructions; 500 Bq/m³ for working places. The latter is a value established by the 2000 national legislative decree 241/2000. According to existing guidelines and regulation both of the area show radon level below risk values. (Arta Abruzzo, 2012) However, recent studies, in particular the ones of Giampaolo Giuliani, a researcher at the Gran Sasso particle physics laboratory, affirm that there is typically a pre-existing (pre-earthquake) condition with rising levels of radon gas bottled up in the earth's cavities and cracks. These bottled-up radon gases are often released via the earthquake's tectonic plate shifting. Therefore, radon measurement should be undertaken at wider scale by ARTA Abruzzo, the local Agency for the Protection of the Environment. With this in mind, it would also be advisable that the buildings under analysis could be selected by ARTA as case studies. Subsequently, architectural design considerations can be suggested by our research team for Radon gas existence for any area reconstruction projects.

4. CONCLUSIONS

The ultimate point of extension from the above analysis is a collection of recommendations for adjusting environmental conditions in these architectural spaces, as examples of architectural design suggestions for similar post-earthquake, historic structures destined for adaptive reuse or rehabilitation in general. These recommendations are intended to eliminate respective pollutant sources or management thereof if removal/elimination is not a realistic option. Three categories of situations are addressed here: allergenic potential, Radon

exposure potential, and natural compounds or biomaterials, particulate exposure/inhalation and toxic or carcinogenic/volatile organic compound pollutant exposure.

4.1 Allergenic potential

Given that the data shows naturally occurring biological evidence of pollens and other allergenic compounds, it can be said that the adaptive redesign of any space under these conditions should consider better controlling the indoor environment for allergenic potential through filtration systems. Whether the climate justifies for cooling indoor air as well is a separate design decision. However, filtration would be suggested in either case to lessen the potential that occupants will be negatively affected by inhalation of, or otherwise coming into contact with, biological compounds and allergens. HEPA filter usage and electronic filter media would be a component of the solution in addition to heat exchange capture between exhaust air and intake air in cold climates.

4.2 Radon exposure potential

Because historically there exists radon gas in these two building site locations, it is recommended that during re-design processes a radon gas assay would be used to confirm existence of radon, and mitigation strategies would be designed into the project development. Most likely isolation of the ground floor from upper floors and point collection/exhaust/evacuation systems would be designed and implemented as needed. In some occasions, passive design solutions for such exhaust can suffice. However, ability to install mechanical assistance for exhaust at a later date is necessary.

4.3 Biomaterials and natural compounds

Heavy moulds found were visually related to apparent water intrusion resultant from damaged roof or water runoff route. Because of no record of a mould problem before the event, it can be assumed that this change in building structure was the result of earthquake shifting of the structure. Regardless of the cause, this situation indicates the need for water intrusion remediation, as well as detoxification and dry out processes prior to re-construction or adaptive reuse. Encapsulation of any mould should not be viewed as adequate due to ability of mould to continue to grow and “bleed” through structure materials at a later date, coming into contact with future occupants.

4.4 Volatile organic compound (VOC), gases and particulate assessment

As the results indicate, there are some low levels of Alkane in existence in one of the sample buildings. By related investigation, it would appear that this is related to the external parking lot facilities proximity. Suggested mitigation is to relocate parking facility to limit the potential of these Alkane compounds infiltrating into the indoor environment, and affecting the intact environmental context. Particulate count (exterior ambient air sample) and CO gas existence at the same location substantiate the need for such mitigation.

4.5 Summative concluding statement

The two buildings surveyed showed different environmental conditions, construction technologies and materials as well as different condition assessment. Although a comparative

analysis of the data is difficult to undertake, the instrumental survey offer us some important suggestions. As a designer, it is an important and environmentally responsible point of design development that one considers the environmental quality before and after redesign or adaptive reuse completion. In fact, there is strong argument that when external air is introduced into the indoor environment by way of architectural design (ie. natural convection by design) or by mechanical methods, or an existing indoor pollutant is not mitigated, there is an implied premises liability by a property owner [10] [11]. These researchers suggest that this liability could easily be extended to errors and omissions relative to the designer. Regardless of the actual liability risks in design, it is ethical that design take into account risks that may be seen regarding a healthy indoor environment. This includes specifying future material design selections that are not VOC, or other known contaminant, producing. That being the case, it is strongly suggested that adaptive reuse designers consider the following sequence of design preparation:

- Carry out a site specific environmental impact investigation
- Test site (exterior ambient and indoor) for present gases, VOC's, particulate matter, bio aerosols, Radon gas, and other possible contaminant materials (eg. Asbestos, lead paint, etc.).
- Analyze sample results to evaluate risk evidence
- Design mitigation plans for each known contaminant
- Specify healthy materials for adaptive design

ACKNOWLEDGEMENTS

Thanks to Superintendency of l'Aquila, in particular the Architect Valerio Piovanello, who identified as a possible ideal case study Palazzo Moscardelli, in Ofena and as well we thank Mr. Sergio Adriani, owner and manager of the Ofena property, who not only allowed us to access the building but shared with us all documentation paperwork produced after the 2009 earthquake damages. Special thanks to ARTA Abruzzo, the Regional Agency for the Protection of the Environment, in particular the Director of l'Aquila facility, Dr. Virginia Lena and Carlo Bellina Agostinoni, who took care of canister samples and provided useful data interpretation and advises.

REFERENCES

- [1] Murphy J., (2016) Indoor Air Quality and Interior Environmental Conditions for Adaptive Reuse of Historic Structures: A case for research and development of guidelines. *Indoor Air 2016: 14th International Conference on Indoor Air Quality and Climate Proceedings*, Ghent, Belgium.
- [2] Pandolfi E., (2013) *Ettore Rossi (1894-1968) architetto del Movimento Moderno*, Pesaro, Metauro Edizioni.
- [3] Pagano G., (1937) *Una colonia montana*, "Casa bella" 116.
- [4] Morganti R., Tosone A., Cocciolone S. (2013), Colony IX May to the Sea's People in L'Aquila. A Particular Example of Thirty Years Architecture. *5th International Conference on Hazards and Modern Heritage*, Conference Proceedings, Sarajevo, 22-24 April 2013, pgs. 283-296.
- [5] De Iulis G., Balena Arista F., Valentini E., Lepidi M., (2010) *Palazzo Moscardelli. Immobile vincolato ex dlgs 42/2004. Progetto per la riparazione ed il recupero a seguito del sisma del 6 aprile 2009 aggregato n. 70*. Technical Report.

- [6] Murphy, J.D., Orlandi, J. and Lombardi, A. (2016, July) Indoor Air Quality Assessment in Adaptive Reuse of Historic Buildings: An Overview and Comparison of Standards and Regulations in Europe and the USA. *SUDEP: International Sustainable Development on Economy and Planning*. Conference '16 Proceedings.
- [7] ARTA Abruzzo, (2012) *Campagne di misura del radon nelle abitazioni ed in altri edifici della Regione Abruzzo. Prospetto riassuntivo dei dati disponibili* (april 2012). Technical Report.
- [8] Danzon, M. (Eds), (2000). *Air Quality Guidelines for Europe*, 2nd Edition, 2000. WHO Regional Publications, European Series, No. 91.
- [9] www.nap.edu/read/12529/chapter/9 J. Torin McCoy, Toxicology Group, Habitability and Environmental Factors Division, Johnson Space Center, National Aeronautics and Space Administration, Houston, TX, (2008). *Spacecraft Maximum Allowable Concentrations for Selected Airborne Contaminants: Volume 5*.
- [10] Murphy, J., O'Marra, B., and Jensen, D. (1995, September). Indoor Air Quality and the Issue of Products Liability: *Is Air a Product? An International Conference on Healthy Buildings in Mild Climates*, Conference Proceedings. Milano, Italy. Vol.3, pgs. 1769-73.
- [11] Murphy, J., Jensen, D., O'Marra, B. (1994, Fall). Exploring the Concept of Building Owners' Premises Liability with Respect to Indoor Air Quality and the Need for Governmental Standards. In L. Morawska, N.D. Bofinger, & M. Maroni (Eds.), *Indoor Air - An Integrated Approach* (Conference proceedings text), pgs. 445-449. U.K., Elsevier Science Ltd.